



## Invasive Animals CRC

Industry & Investment NSW  
Vertebrate Pest Research Unit  
Orange, 2800

Phone: +61 2 6391 3907

Mobile: 0400 586 060

Fax: +61 2 6391 3972

E: [nrm@invasiveanimals.com](mailto:nrm@invasiveanimals.com)

Website: [www.invasiveanimals.com](http://www.invasiveanimals.com)

NRM Liaison Officer Jessica Marsh  
Technical Officer Liz Snare

# NRM Notes

Issue 2 ~ April 2010

- **New Report: Review of cat ecology and management in Australia**
- **New Report: The economic impacts of vertebrate pests in Australia**
- **National Landcare Forum – Adelaide, 23-25 March 2010**
- **PestMaps website providing access to pest animal maps**
- **Feral Camel Management Project- new website launched**
- **Molonglo Pest Information Pack**

Welcome to the 2<sup>nd</sup> edition of *NRM Notes*. There has been a great response from everyone and the mailing list is expanding quickly. Remember, if you or your agency would like to include any stories or reports about the good work you are doing, or current pest animal issues you are facing, contact me anytime and we can arrange an article for the next newsletter.

The purpose of this newsletter is to share and promote resources and encourage communication across all NRM regions, all States and Territories and all NRM focused groups. Better communication and coordination will help us all work more effectively together to help reduce the damage caused by pest animals across the Australian landscape.

*Thanks for your interest and support, Jessica (NRM Liaison Officer, IA CRC)*

## Review of cat ecology and management strategies in Australia

*Dr Elizabeth Denny and Professor Christopher R Dickman*

This report was produced for the Invasive Animals Cooperative Research Centre by authors Elizabeth Denny and Professor Christopher Dickman of the University of Sydney.

***“Cat management needs to be strategic, holistic and humane... To achieve this we need to better understand how cats move from domestic to stray to feral and this report certainly begins to fill some of these knowledge gaps”***

*(Bidda Jones, RSPCA’s Chief scientist)*

Cat impacts are not limited to predation. Cats also compete with native animals for food, water and shelter, and are the only definitive host for a parasite that causes toxoplasmosis- a condition that severely effects several species of native animals, and is also transmissible to humans.

Cat owners can help by adhering to RSPCA principles of responsible cat ownership: desexing and microchipping owned cats and keeping them indoors particularly between dawn and dusk, and take responsibility for strays by bringing them into your family or taking them to the RSPCA.

35 vulnerable and endangered bird species, 36 mammal species, 7 reptile species and 3 amphibian species are thought to be adversely affected by feral cats. They pose such a risk that predation by feral cats is listed as a Key Threatening Process under the *Environmental protection and Biodiversity Conservation Act 1999*.

**Link:** [www.feral.org.au/feral\\_documents/CatReport\\_web.pdf](http://www.feral.org.au/feral_documents/CatReport_web.pdf)

**Contact:** Jessica Marsh (Gibson): (02) 6391 3907 or [jessica.gibson@industry.nsw.gov.au](mailto:jessica.gibson@industry.nsw.gov.au)





## Economic Impacts of vertebrate pests in Australia

Wendy Gong, Jack Sinden, Mike Braysher and Randall Jones

This publication is the first to produce an Australia wide estimate of agricultural losses measured with the economist's concept of welfare. The welfare of producers is the difference between market price and the cost of production. This study looks at pests as an economic problem in terms of the agricultural losses/reduction in welfare that they cause.

Economists define an impact as a change in the welfare of consumers and producers, and measure the impact as a change in economic surplus. The welfare or surplus of consumers is the difference between what they are willing to pay and what they have to pay to acquire a good or service. The agricultural losses are estimated separately for wild dogs, foxes, rabbits, and feral pigs and for the main agricultural industries (beef, wool, sheep meat, and grains). Data on the expenditures by governments and landholders on management, administration and research are presented.

**Results show that \$123m is spent each year on research, administration and control, while the agricultural loss is \$621m. It is therefore possible that too little money is being spent on the management of invasive species and a cost-benefit analysis seems warranted.**



**Links:** [http://www.feral.org.au/feral\\_documents/IACRC\\_EconomicImpactsReport.pdf](http://www.feral.org.au/feral_documents/IACRC_EconomicImpactsReport.pdf)  
[http://www.feral.org.au/feral\\_documents/IACRC\\_EconImpactsSummary.pdf](http://www.feral.org.au/feral_documents/IACRC_EconImpactsSummary.pdf)

**Contact:** Jessica Marsh (Gibson): (02) 6391 3907 or [jessica.gibson@industry.nsw.gov.au](mailto:jessica.gibson@industry.nsw.gov.au)



## National Landcare Forum – Adelaide

The National Landcare Forum was held from the 23 – 25th March 2010 in Adelaide. The theme this year was 'Landcare celebrates – 20 years of achievements and future challenges'

Chris Lane, the Terrestrial Products and Strategies Program Coordinator presented 'feral research', an informative session revealing the new generation research and hands on control and management tools that land managers will be able to use in their pest animal control programs – on an individual, local and regional scale. In particular, advances in wild dog, fox, rabbit and feral pig control research were showcased and the session demonstrated that there is strong interest amongst land managers regarding pest animals and available management techniques.

The National Landcare Forum had an expo section that allowed groups and companies to demonstrate their contributions towards improved land management. 'Ecoknowledge' was one such company - they are an ecosystem management consultancy who works closely with land managers and government agencies on a wide variety of natural resource management projects. Ecoknowledge information packs are available that provide information on their services and expertise.



**Links:** [www.nationallandcareforum.com.au](http://www.nationallandcareforum.com.au)  
[www.ecoknowledge.com.au](http://www.ecoknowledge.com.au)

**Contact:** Jessica Marsh (Gibson): (02) 6391 3907 or [jessica.gibson@industry.nsw.gov.au](mailto:jessica.gibson@industry.nsw.gov.au)



## Upcoming Event for 2011.....



For more information  
visit the website  
[www.avpc.net.au](http://www.avpc.net.au)





## PestMaps Website provides access to pest animal maps

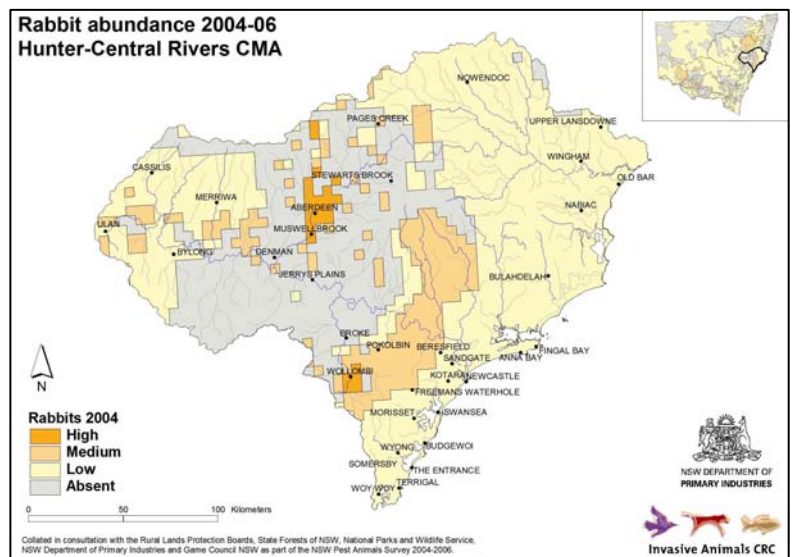
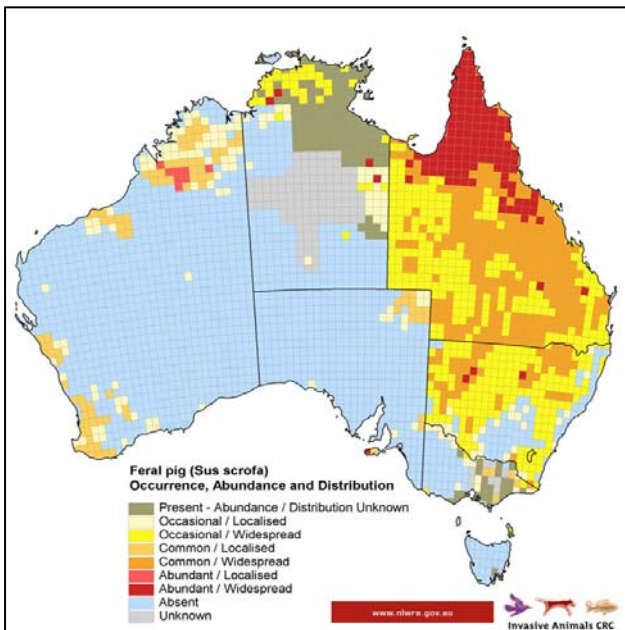
**WHAT?** There is now a website dedicated to providing you with access to a range of maps showing occurrence, distribution and abundance of significant invasive species at a regional, state/ territory, and national scale. The site provides quick reference to maps and information produced at many scales contributed by a number of groups, including the Invasive Animals CRC.

**WHY?** The aim of *PestMaps* is to provide access to existing published maps and information to promote sharing and use of that information by a broad cross-section of interested end-users (eg. NRM groups, CMA's, land managers, Landcare groups). Over time, *PestMaps* will contain increasingly useful, accurate and up-to-date information at many different scales.

**WHO?** *PestMaps* currently contains many maps and data originally prepared for publication in: West, P. (2008). *Assessing Invasive Animals in Australia 2008*. National Land & Water Resources Audit and Invasive Animals CRC, Canberra.

**SPECIES?** The species covered in *PestMaps* include: cane toads, common carp, feral cats, feral deer species, wild dogs, foxes, feral goats, feral pigs, rabbits and common starlings.

[www.feral.org.au/content/PestMaps/PestMaps.cfm](http://www.feral.org.au/content/PestMaps/PestMaps.cfm)



**Link:** <http://www.feral.org.au/content/PestMaps/PestMaps.cfm>  
**Source:** West, P. (2008). *Assessing Invasive Animals in Australia 2008*. National Land & Water Resources Audit and Invasive Animals CRC, Canberra  
**Contact:** Peter West (02) 6391 3887 or [peter.west@industry.nsw.gov.au](mailto:peter.west@industry.nsw.gov.au)

## Queensland Pest Animal Symposium

Gladstone 3-5 August 2010

[www.pestanimalsymposium.com.au](http://www.pestanimalsymposium.com.au)

Managing pest animal impacts – prevention, containment and monitoring





## [www.feralcamels.com.au](http://www.feralcamels.com.au)

An interim website for the Feral Camel Management Project has been established to make information available while the full site is still being developed. The Feral Camel Management Project addresses the urgent need to significantly reduce feral camel numbers to lessen their impacts in remote Australia on biodiversity, wetlands, waterholes and sites of cultural value to Aboriginal people, infrastructure (fences, houses, cars) and personal safety.

There are approximately one million feral camels in remote Australia and this population is doubling every nine years. They are already a significant pest across more than 3 million km<sup>2</sup> in the arid and semi-arid parts of WA, SA, the NT and parts of western Qld, and they range over many thousands of hectares in any given year. They cause more than \$14m worth of damage to infrastructure and livelihoods each year.

The Feral Camel Management Project is a national approach, which brings together for the first time all of the relevant state and territory governments (SA, WA, Qld, NT), Aboriginal organisations across the four jurisdictions (land trusts, corporations and land councils), NRM boards, conservation groups, the pastoral industry and commercial interests to protect identified refuges for biodiversity in northern and remote Australia that are under threat from feral camels.

**Subscribe to the Feral Camel Newsletter at [www.feralcamels.com.au](http://www.feralcamels.com.au)**

**You can also provide feedback and register your details to help create a skills database**



### **Community Action Grants- Applications open July 2010**

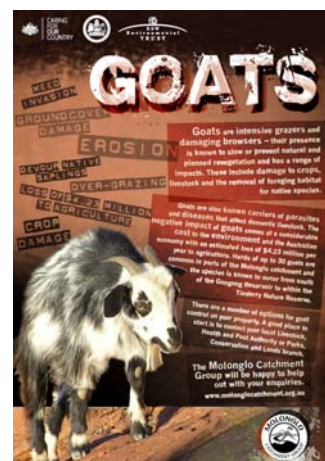
Community Action Grants are the small grants component of the Australian Government's Caring for our Country initiative that aims to help community groups take action to conserve and protect their natural environment. The grants are targeted towards established community-based organisations which have sustainable farming and/or protecting and enhancing the natural environment as their principle objective. Community Action Grants support local activities such as tree planting, revegetation, dune rehabilitation, field days, improving land management practices and recording and use of traditional ecological knowledge.

**Don't miss out on an opportunity to fund that on ground project!**

### **Molonglo Catchment Pest Animal Information Packs**

The Molonglo Catchment Group have produced an information pack that gathers together fact sheets to give an overview of pest animals in the Molonglo catchment. This resource helps identify signs of pest animals and also includes potential control methods, ideas to improve the productivity of the land, how to be a good neighbour and methods to enhance the natural landscape.

The information provided encourages a strategic and coordinated approach to pest animal management yet also gives basic and clear information on a range of pest animals. Domestic cats and dogs, foxes, goats, pigs, deer and rabbits are included in the easy to read fact sheets and there is also a good summary of relevant NSW legislation. This information pack is a great example of engaging with the community and encouraging coordinated work.



**Link:** <http://www.molonglocatchment.org.au>

**Contact:** Molonglo catchment coordinator: [coordinator@molonglocatchment.org.au](mailto:coordinator@molonglocatchment.org.au) or (02) 6299 2119



*Remember, if you have any news that you would like included in the next NRM Notes please send details to me and I will incorporate them into the next edition. Thanks for your interest - I look forward to hearing from you soon.*

*Jessica Marsh – (02) 6391 3907 or 0400 586 060/ [jessica.gibson@industry.nsw.gov.au](mailto:jessica.gibson@industry.nsw.gov.au)*