



Primary Industries



Invasive Animals CRC



CARING FOR OUR COUNTRY

Vertebrate Pest Research Unit  
Orange 2800

Phone: +61 2 6391 3907

Mobile: 0400 586 060

[jessica.marsh@industry.nsw.gov.au](mailto:jessica.marsh@industry.nsw.gov.au)

[www.invasiveanimals.com](http://www.invasiveanimals.com)

Liaison Officer: Jessica Marsh  
Project Officer: Annette Brown

# NRM Notes

Issue 6 ~ June 2011

- Community action to control foxes in Victoria
- Vertebrate Pest Management Course, Orange 2011
- Community Action Grants 2011-12
- Feral Photos competition launched
- Latest PestSmart Toolkit documents
- Cooperative Wild Dog and Feral Pig Project success
- National NRM Survey

## Welcome to our June edition of NRM Notes.

The Australasian Vertebrate Pest Conference has just been held in Sydney and it was a great success, thanks to all the sponsors and the support we received- it was all greatly appreciated.

Thanks to those groups who have submitted articles for this issue and I would encourage you all to let me know about your projects for the next issue of NRM Notes which will be out in September- send me a brief project update and some pictures and we will get your good work out there for others to see

*All the best and thanks for your ongoing interest, Jessica*

## AVPC 2011: Community action to control foxes along the Cape Liptrap coast

Community concern over the threats posed by foxes to native fauna prompted the Victorian group Friends of Venus Bay Peninsula Inc (FoVBP) to start a local fox control program on the peninsula in 2007. In 2008 the project area was expanded to include Cape Liptrap Coastal Park, with the help of the South Gippsland Landcare Network (SGLN). The aim was to increase fox management activities among land managers with properties adjoining the Park, who mainly use their land for beef agriculture.

Initially, land managers had little incentive to do fox control however all were willing to increase their management to support ongoing control. Permanent trapping and baiting control points were established on each of the 10 participating properties. Participants received training locally in the use of 1080 baits and were also given financial support to remove boxthorn. Interaction between the land managers and the project partners saw a marked increase in landowner-driven fox control. This demonstrates the important role of one-on-one involvement or extension has on influencing practice change.

Even though the 2-year project finished in mid-2010, fox control efforts have been sustained by landowners and FoVBP. They have attracted funding to keep the services of the contractor to trap and shoot foxes, which complements ongoing landholder fox control. Well done to Kate and the SGLN team!



Link: <http://www.friendsofvenusbaypeninsula.org.au/page2aa.html> and <http://www.sgln.org.au/>  
Contact: Kate Williams, South Gippsland Landcare Network: [katew@wgcm.vic.gov.au](mailto:katew@wgcm.vic.gov.au)



## Vertebrate Pest Management Course – Orange, April 2011

The Orange Agricultural Institute played host to the annual NSW Vertebrate Pest Management Course in April this year. The course focused on providing technical and practical advice derived from research outcomes specialising in the control of invasive animal species as well as entry level training in vertebrate pest management for both agricultural protection and conservation.

Learning outcomes included:

- Describing basic pest animal biology, behaviour and control,
- Designing surveys to assess pest animal abundance and impact.
- Identifying methods for live trapping and holding, releasing or humanely destroying animals, and
- Working with small groups and developing an action plan for the management of target pests in a local area

In excess of 50 participants from across Australia, including a contingent from NSW such as the Livestock Health and Pest Authority, National Parks and Wildlife Service (OEH), Central West, Lachlan and Border Rivers/Gwydir CMAs, ACT Parks, Forests NSW, and Invasive Animals CRC took part in the course. Great feedback was gained after the course and participants left with a large range of resources and new information that they will be able to utilise in their daily work activities. Thank you to all attendees, you were a great group of people to work with throughout the week and your enthusiasm was greatly appreciated.



**Link:** <http://www.dpi.nsw.gov.au/agriculture/profarm/courses/vertebrate-pest-management>  
**Contact:** Byron Stein, NSW DPI: [byron.stein@industry.nsw.gov.au](mailto:byron.stein@industry.nsw.gov.au)

## Community Action Grants – 2011-12 Applications now open!

Community Action Grants are the small grants component of the Australian Government's Caring for our Country initiative that aims to help community groups take action to conserve and protect their natural environment. The grants are targeted towards established community-based organisations that are successfully delivering projects to support sustainable farming and/or protect and enhance the natural environment.

Community Action Grants support local activities such as pest and weed management, tree planting, revegetation, dune rehabilitation, field days, improving land management practices, and recording and use of traditional ecological knowledge. Environmental, Indigenous, Landcare, Coastcare and sustainable agriculture community groups are encouraged to apply for grants between \$5000 and \$20,000. Applications close at 5pm (EST) on Monday 1 August 2011.

**Don't miss out on an opportunity to fund your on-ground project and if you are successful in obtaining a grant and would like any assistance with implementation or monitoring, please contact me and I will be able to assist you**



**Link:** <http://www.nrm.gov.au/cag/index.html>  
**Contact:** Jessica Marsh, NRM Liaison Officer, Invasive Animals CRC: (02) 6391 3907 or [jessica.marsh@industry.nsw.gov.au](mailto:jessica.marsh@industry.nsw.gov.au)



## Feral Photos photography competition launched

Do you have a great photo of one of Australia's pest animals or the damage they cause? We are looking for the best original photographs of pest animals in Australia, their impacts and control, or monitoring activities.

Colour, black & white or sepia-tone photos, remote camera photos, amusing photos and panoramic photos will all be accepted. Our finalists will be featured in a special 2012 Feral Photos competition calendar and there are major prizes for the winning entries.

All entries must be provided electronically or in hard copy with a completed entry form available from [www.invasiveanimals.com/feral-photos](http://www.invasiveanimals.com/feral-photos). See the website or contact Jessica for more details.



**Link:** [www.invasiveanimals.com/feral-photos](http://www.invasiveanimals.com/feral-photos)

**Contact:** Jessica Marsh, NRM Liaison Officer, Invasive Animals CRC: (02) 6391 3907 or [jessica.marsh@industry.nsw.gov.au](mailto:jessica.marsh@industry.nsw.gov.au)

## Latest PestSmart Toolkit documents

Several **PestSmart Toolkit** fact sheets are now available online for foxes, rabbits, feral cats, feral pigs, carp, and new and emerging species.

The **PestSmart Toolkit** is designed to provide information and guidance on best-practice invasive animal management to policy makers, managers and implementers.

**PestSmart** will provide comprehensive management information packages on several key vertebrate pest species. Information will be provided in various forms such as fact sheets, case-studies, technical manuals and scientific reports. Remember to check the website regularly for updates!



**Link:** <http://www.feral.org.au/pestmart/>

**Contact:** Keryn Lapidge, PestSmart Project Manager, IA CRC: (08) 8357 1222 or [keryn.lapidge@invasiveanimals.com](mailto:keryn.lapidge@invasiveanimals.com)

## Do you subscribe to the Feral Flyer?

The Feral Flyer is the regular (usually fortnightly) e-newsletter of the Invasive Animals CRC. You can subscribe to the IA CRC's Media Releases email updates and the Feral Flyer by clicking the following link: <http://www.invasiveanimals.com/media-centre/>.

If you have an article for submission, you can email [feralflyer@invasiveanimals.com](mailto:feralflyer@invasiveanimals.com). Back issues are also available for download from the website.



**Free entry**

**Feral Photos**  
Invasive Animals CRC Photography Competition 2011  
[www.invasiveanimals.com/feral-photos](http://www.invasiveanimals.com/feral-photos)

See website for more details!



## Collaborative pest program assists landholders

The Hawkesbury-Nepean Catchment Management Authority (CMA) recently teamed up with Tablelands Livestock Health and Pest Authority (LHPA) to deliver a successful collaborative project aimed at reducing feral pig and wild dog populations in the Greater Blue Mountains Heritage Area in NSW. The project was jointly funded by the Hawkesbury-Nepean CMA and the LHPA using around \$20,000 from the Caring for our Country program.

Ongoing control activities aim to reduce the threat posed to native flora and fauna, and also minimise the risk of livestock attacks in the region. After two rounds of control, over 20 wild dogs, 27 feral pigs and several foxes and feral cats were removed from the area.

Tablelands LHPA ranger Grant Eccles says that an important outcome of the project has been the high level of community support and cooperation in relation to controlling pest animals. Many landholders are now continuing on with control activities in their own time, with assistance from the LHPA. Landholders from across the district have also expressed a keen interest in participating in future collaborative pest projects.

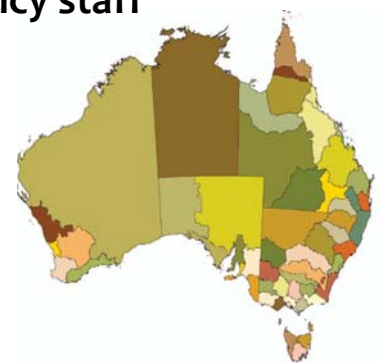


Link: <http://www.lhpa.org.au/news/pest-program-strengthens-community-cooperation>

Contact: Grant Eccles, Ranger, Tablelands LHPA: 0428 484 506 or Geoff O'Connor, Hawkesbury-Nepean CMA: (02) 4861 9012

## National NRM Survey on capacity and barriers for NRM agency staff

During May this year, a large scale survey was undertaken of all the NRM regions across the country. The survey was designed to identify the current capacity and also the barriers that staff working within NRM agencies face with regards to invasive animal management work. I would like to thank all participants who generously gave their time and I am hoping that the results from the survey will help me and the Invasive Animals CRC tailor assistance to you and your respective NRM and CMA groups into the future. Some preliminary results were presented at the Australasian Vertebrate Pest Conference last week and a report will be compiled and distributed containing the results of the survey in the next couple of months.



Contact: Jessica Marsh, NRM Liaison Officer, Invasive Animals CRC: (02) 6391 3907 or [jessica.marsh@industry.nsw.gov.au](mailto:jessica.marsh@industry.nsw.gov.au)

## Map feral animals online!

### New features include:

- RabbitScan, CamelScan, FoxScan & MynaScan
- Map printing tool – create & print maps for your area
- Bulk data importing table to upload many sightings
- Month & year filter
- New images in all photo galleries

# FERALSCAN ORG.AU

Help map feral animal sightings in your area.  
Get Involved!



RabbitScan

CamelScan

FoxScan

FeralPigScan

MynaScan

ToadScan

## Research in review...

This section of NRM Notes is dedicated to the scientific papers that have recently been published and don't readily find their way out to on-ground managers and members of NRM agencies. Below is a summary of two recent journal publications regarding pest animal management.

### *Using a General Index Approach to Analyse Camera-Trap Abundance Indices.*

Andrew J. Bengsen, Luke K.-P. Leung, Steven J. Lapidge, Iain J. Gordon

From: *Journal of Wildlife Management*, Early view, published online: 21 APR 2011, DOI: 10.1002/jwmg.132

Journal homepage: [http://onlinelibrary.wiley.com/journal/10.1002/\(ISSN\)1937-2817](http://onlinelibrary.wiley.com/journal/10.1002/(ISSN)1937-2817)

#### Journal Abstract:

The lack of variance estimates constrain the utility of abundance indices calculated from camera-trap data. We adapted a General Index model, which allows variance estimation, to analyze camera-trap observations of feral pigs (*Sus scrofa*) for population monitoring in a tropical rainforest. We tested whether the index would respond to population manipulation, and found that it decreased by 57% following removal of 24 pigs and remained low in the following period. Our method is useful for monitoring other large animals in difficult landscapes, and the model can be used to enhance the value of existing data sets.

**Keywords:** abundance index; camera trap; feral pig; remote monitoring; *Sus scrofa*; wet tropics

### *Detecting the impact of invasive species on native fauna: Cane toads (*Bufo marinus*), frillneck lizards (*Chlamydosaurus kingii*) and the importance of spatial replication.*

Beata Ujvari, Richard Shine and Thomas Madsen

From: *Austral Ecology* (2011) 36, 126-130

Journal homepage: <http://www.blackwellpublishing.com/journal.asp?ref=1442-9985&site=1>

#### Journal Abstract

An understanding of which native species are severely impacted by an anthropogenic change (such as the arrival of an invasive species) and which are not is critical to prioritizing conservation efforts. However, it is difficult to detect such impacts if the native taxa exhibit strong stochastic variations in abundance; a 'natural' population decline might be wrongly interpreted as an impact of the invader. Frillneck lizards (*Chlamydosaurus kingii*) are large iconic Australian agamids, and have been reported to decline following the invasion of toxic cane toads. We monitored three populations of the species in the savanna woodland of tropical Australia over a 7-year period bracketing toad arrival. One population crashed, one remained stable and one increased. Hence, studies on any single population might have inferred that cane toads have negative, negligible or positive effects on frillneck lizards. With the benefit of spatial replication, and in combination with observations of prey choice by captive lizards, our data suggest that invasive cane toads have had little or no effect on frillneck abundance.

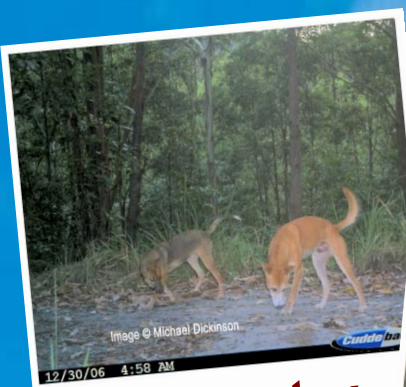
**Key words:** cane toad; ecological impact; frillneck lizard; invasive species; replication.

If you would like any of these scientific papers supplied in full, please don't hesitate to contact me and I can arrange to email or post you a copy.

[jessica.marsh@industry.nsw.gov.au](mailto:jessica.marsh@industry.nsw.gov.au)

# Feral Photos

Invasive Animals CRC Photography Competition 2011



**Free entry**



**Major prizes**



**Enter now**



**Closes Oct 31**

**Do you have a great photo of one of Australia's pest animals or the damage they cause?**

We are looking for the best original photographs of pest animals in Australia, their impacts and control, or monitoring activities.

Colour, black & white or sepia-tone photos, remote camera photos, amusing photos and panoramic photos will all be accepted.

Our finalists will be featured in a special 2012 Feral Photos competition calendar!

All entries must be provided electronically or in hard copy with a completed entry form available from [www.invasiveanimals.com/feral-photos](http://www.invasiveanimals.com/feral-photos). See the website or contact Jessica at [jessica.marsh@industry.nsw.gov.au](mailto:jessica.marsh@industry.nsw.gov.au) for more details!

Proudly supported by:



CARING  
FOR  
OUR  
COUNTRY



Primary  
Industries